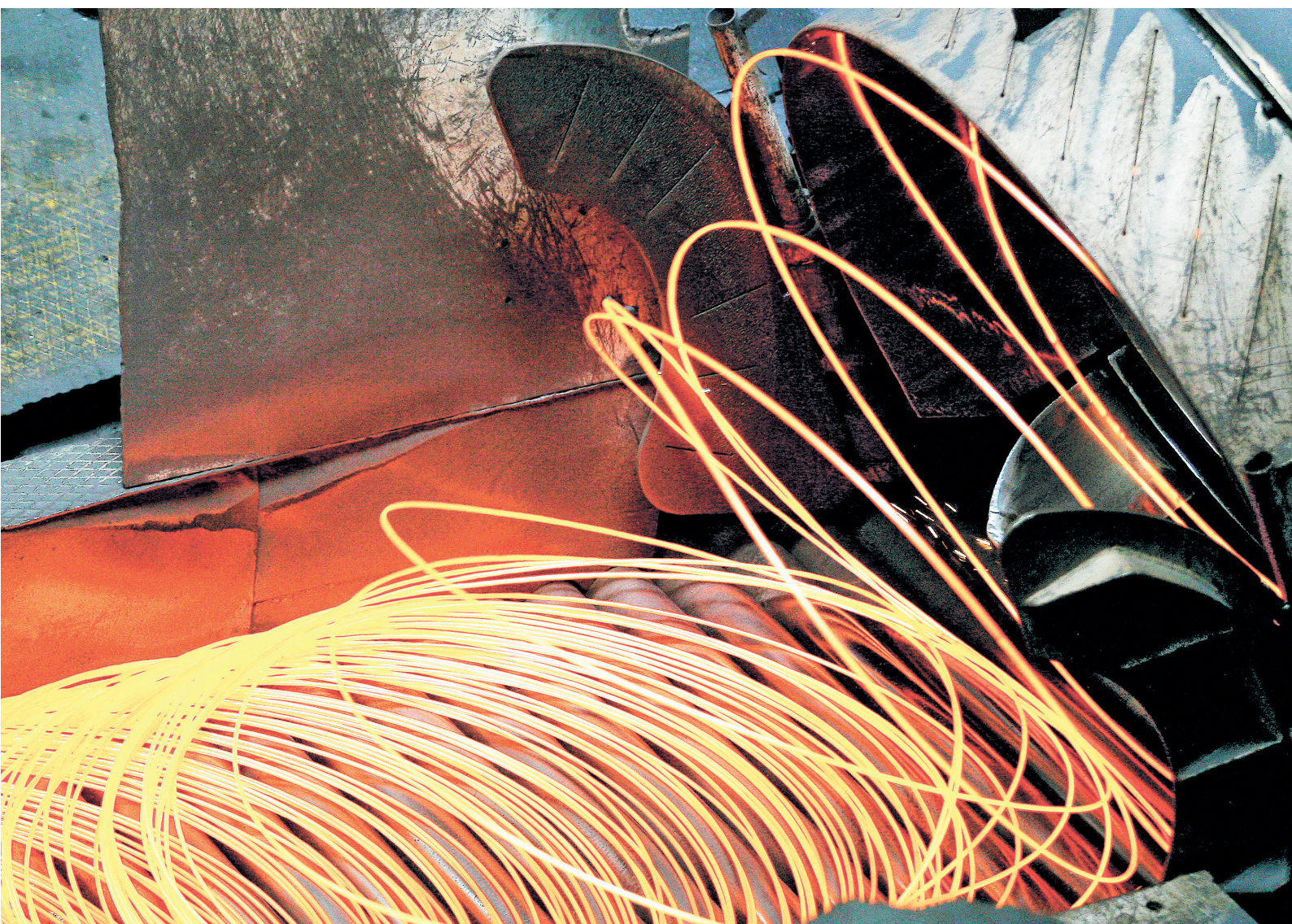

ABB INDUSTRIAL DRIVES

DCT880, 20 A to 4160 A

Thyristor power controller



Simplifying your world without limiting your possibilities!

Thyristor Power controller DCT880

With the new DCT880 ABB offers its customers a thyristor power controller for precise control of resistive or inductive heaters and infrared heaters in applications for annealing, drying, melting or heating in glass, plastic or metal industry.

Removable memory unit

Stores all the software and parameter configurations in an easily replaceable and simple-to-install module.



Remote monitoring

With a built-in web server, NETA-21 makes worldwide access easy to industrial applications.



Intuitive human-machine interface

Intuitive, high-contrast and high-resolution display enabling easy navigation in multiple languages (+J404).



Startup and maintenance tool

PC tool for startup, configuration, process tuning and daily use. The PC tool used for the well known ABB ACS880 drives family is connected via Ethernet or USB interface.



Communication with all major automation networks

Fieldbus adapters enable connectivity with all major automation networks.



Tailor made solutions

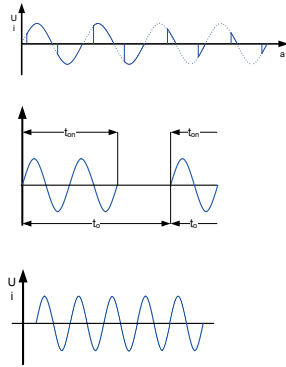
ABB offers ready to use cabinet solutions with or without integrated transformers. They are tailored according to individual requirements.



Extended connectivity

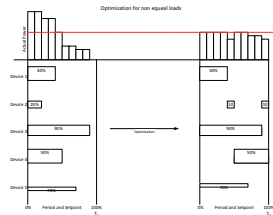
In addition to the standard interfaces, the DCT880 has three built-in slots for additional I/O extension modules.





Flexible control

The variety of control methods (phase control, full-wave burst control, half-wave control and I-, U-, P- and I² control) ensures that even the most demanding applications with short rise times or a high hot / cold ratio can be controlled dynamically and accurately.



Load optimization

Reduction of peak loads using optimized load balancing in parallel operation of multiple devices which communicate directly with each other (+S552).



Programming of applications

The DCT880 has three free process controllers. It can be precisely tuned using application programming (IEC61131-3) to the needed requirements. Additionally it can be combined with other components such as ABB PLCs and HMIs.

DCT880 the new simplicity

Demanding industrial customers receive a high level of user friendliness using the DCT880. It is equipped with the advantages of the ABB ACS880 drive family, the multilingual plain text control panel, a USB interface and advanced PC tools.

Integrated current measurement

The high-precision 3-phase current measurement ensures a precise calculation of the load resistance. Thus a detailed load circuit monitoring is enabled and the system availability is significantly increased.

ABB Thyristor Power controller DCT880



T1, T2

T3



T4

T5

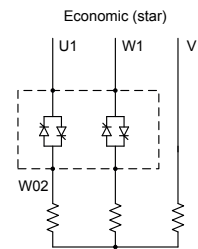
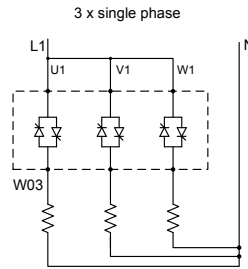
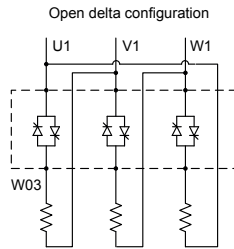
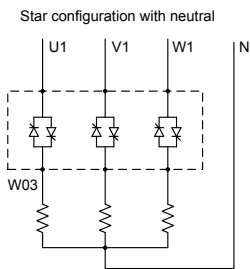
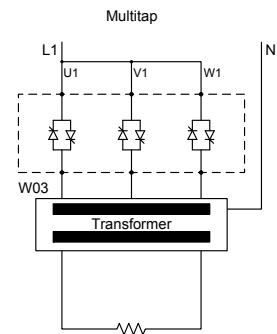
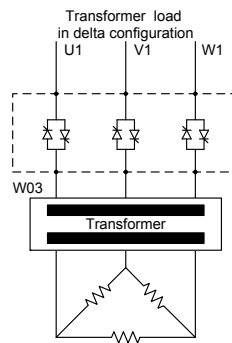
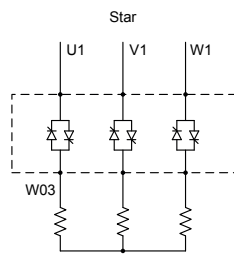
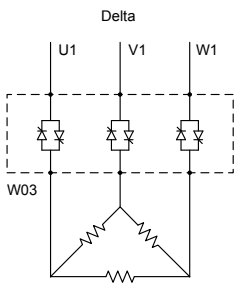


T6

T8

Unit size	Rated current I_{AC} [A]	Supply voltage [V_{AC}]									Dimensions h x w x d [mm]	
		W03 (3 legs)					W02 (2 legs)					
		110/230	400/525	690	800	990	110/230	400/525	690	800		990
T1	20	●	●				●	●				370 x 270 x 215
	35	●	●	●			●	●	●			
	55	●	●				●	●				
	80	●	●	●			●	●	●			
	100	●	●	●			●	●	●			
T2	125	●	●				●	●			370 x 270 x 271	
	160	●	●	●			●	●	●			
	200	●	●				●	●				
T3	245	●	●				●	●			460 x 270 x 317	
	325	●	●				●	●				
	360	●	●	●			●	●	●			
T4	420	●	●				●	●			645 x 270 x 352	
	550	●	●				●	●				
	630			●					●			
	675	●	●				●	●				
T5	740	●	●				●	●			944 x 510 x 410	
	890	●	●	●								
	960						●	●	●			
T6	1300	●	●	●			●	●	●		1750 x 460 x 410	
	1750	●	●	●			●	●	●			
T8	2100	●	●	●	●	●	●	●	●	●	1750 x 760 x 570	
	2700	●	●	●	●	●	●	●	●	●		
	3200	●	●	●	●	●	●	●	●	●		
	3900			●	●				●	●		
	4200	●	●				●	●				

Load configuration



SF_DCT_001_schem-dreieck_sai

ABB Automation Products GmbH
Motors and Drives
Wallstadter Straße 59
68526 Ladenburg, Germany

© Copyright 2019 ABB. All rights reserved.
Specifications subject to change without
notice.